



GuideLines

Number 356 – Thursday 21st March 2024

Tēnā koutou katoa

(Greetings, hello to you all)

Flora News

The **kahikatea** in the Nikau Grove has beautiful and unusual orange fruit that the birds are loving; so much so this may be the only view you'll get of them this season. The purple-black section is the seed which the birds have to eat before they can get the orange fruit.

After it was discovered that kahikatea timber did not taint food it was used for boxes to export butter until strong cardboard was developed.



Guide Dennis has shared these photos of ***dermocybe canaria* (skull cap)** fungus on the Wattle Track taken a week apart. These were a definite highlight for the schools visiting in early March.

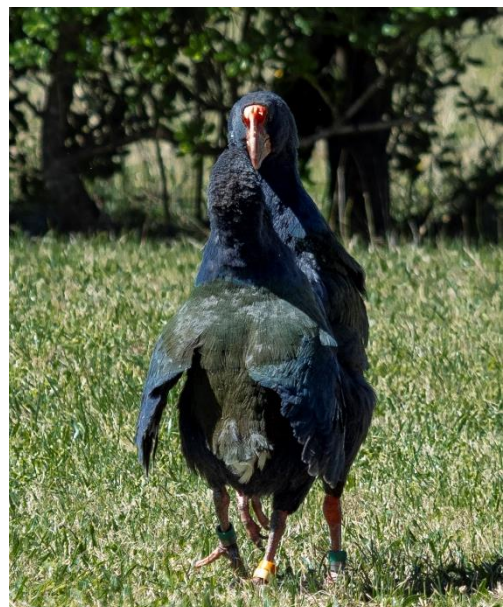


Fauna News

Takahē update

After their chicks' translocation, **Anatori and Tussie** have been seen in what appeared to be aggressive behaviour: Chest bumping, rigidly upright aggressive stance, some unusually loud calling and circling and twining necks. These are all displays of pair bonding behaviour, normal in the early mating season and also in times of stress.

The chicks have settled down with their new roomies at Burwood, and are busy learning the ropes in preparation for moving to their forever homes. Don't forget to check on where our takahē are these days on the blog here.





Guide Virginia has shared her delightful encounter with **kōkako Luna**, one of last season's offspring, romping alongside the Generator Track playing with twigs and pine needles before returning to her normal feeding routine.



You can see her capture of the pink wattles of a youngster hanging out at the Wattle sugar feeder with the korimako in this [edition's footer](#).

Tiritiri Matangi from the air

Guide Annie Albers asked a friend to video the motu from a helicopter. To see what the high flying birds see when they pass us by, [click here](#).

Invitation from Aotea Great Barrier Environmental Trust

We have received the following invitation:

“Aotea Great Barrier Environmental Trust would like to invite you to the opening of Erin Forsyth's exhibition on the Birds and Forest Taonga species of Aotea. The exhibition will open on Saturday 23 March (opening event 2-4pm) at the Aotea Arts & History Village, Claris. It will run until Monday 8 April. We hope to see you there!

The exhibition will also launch our new 'Forest Taonga of Aotea' poster, the posters will be available for sale through the gallery and our website.

[Please click here](#) for Aotea Arts & History Village flyers, do get in touch if you have any questions.”

Ask the Experts:

Send your most vexing questions to guidelines@tiritirimatangi.org.nz and we'll ask the experts for an answer.

Don't forget we love to get your favourite newsy photos for sharing.

Up and coming

Tiritiri Matangi Talks 2024 Monday 29th April – Seagrass Meadows

Put it in your diary and register in advance for this webinar:

https://us02web.zoom.us/webinar/register/WN_2ykOrmYwRfytV3v6h3cYbw

	Monday 10th June
SoTM Social	Monday 13 th May
Supporters' Weekends	Saturday 11th May
	Saturday 13th July
	Saturday 7th September
	Saturday 5th October
Working Weekends	Easter Weekend - 29th March
	King's Birthday Weekend - 1st June

Focus on Te Reo Māori

This is a major part in the New Zealand Curriculum across all levels in schools.

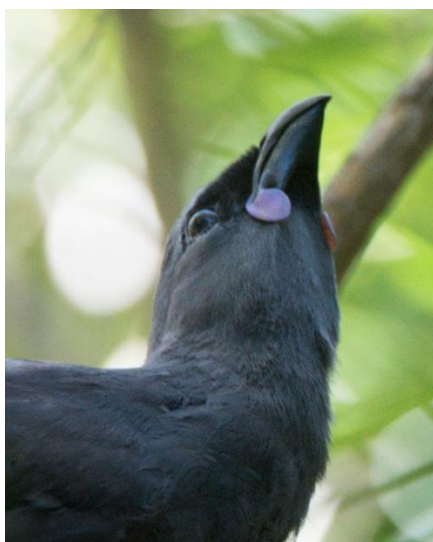
1. **Helpful Guidelines for all SoTM members for upskilling in Te Reo Māori.**
<https://www.stuff.co.nz/national/maori-language-week/114961703/power-te-reo-maori-video-lesson-pronounce-words-with-confidence>
2. The following link has been provided by the 2022 Year 11 te reo Māori students at Rangitoto College. It is excellent for learning about vowel and consonant sounds, and the use of macrons, in te reo Māori. It includes some key words specific to Tiritiri Matangi.
https://docs.google.com/presentation/d/190hdBjzxyx_2Cpe8DC8aMI4mly_ZUShyqjW62rN-6hvY/edit?usp=sharing
3. Note the ***Māori Bird Lore - An Introduction*** by Murdoch Riley is available in the office for guides/ SoTM members to pick up and dip into during lunch breaks.
4. **Kupu Māori / words.** Ideal to constantly check the aural: Te Aka Māori Dictionary <http://maoridictionary.co.nz/> The sound in Māori is often quite different from the way many of us have traditionally pronounced kupu / words.

Cybersleuth

- [Officials preparing for inevitable 'tsunami' of bird flu coming to New Zealand](#)
- [Grand Union Canal: Sanctuary saving swans caught up in London oil dump](#)
- [An obsessed insect hunter: The creepy-crawly origins of daylight savings](#)
- [Toroa chick dies after eating plastic at Dunedin albatross colony](#)
- [Argentine ant sniffer dog averts potential disaster on Matiu / Somes Island](#)
- [Whangārei Native Bird Recovery Centre at risk of closure if funding not found](#)
- [Researchers aim to help wild mussel beds recover around Tasman and Marlborough](#)

SoTM website links and blogs

- [SoTM blog page](#)



**Ngā mihi maioha
(with thanks and appreciation)**

Photographs:

Header and concert

Kahikatea

Dermocybe canaria (skull cap fungus)

Takahē

Kōkako (including footer)

Maritime Historic Day

Libby May

Karin Gouldstone

Dennis Rose

Jonathan Mower

Virginia Nicol

Geoff Beals



Copyright © 2024 Supporters of Tiritiri Matangi Inc. All rights reserved
You are receiving this email because you are interested in Tiritiri Matangi Island

Our mailing address is:
Supporters of Tiritiri Matangi Inc
PO Box 90814
Victoria Street West
Auckland 1142
New Zealand