



Tiritiri Kids, by Stacey

When you visit Tiritiri Matangi Island you are likely to meet our volunteers who are guides, work in the shop and support various projects. SoTM operates smoothly because everyone works together as a team. There is another team busy working away on the Island, the F.B.I., otherwise known as fungi, bacteria and invertebrates.

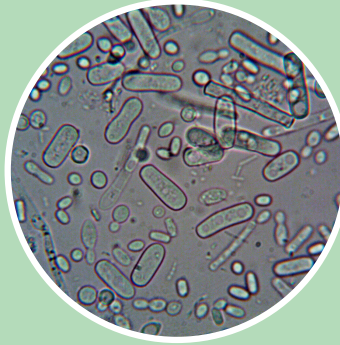
Unscramble the words below and find the hidden word. Have fun!

Fungi, bacteria and invertebrates help organic materials such as branches, leaves, large logs, fruit and flowers to break down and decompose. They recycle the nutrients back into the soil and this helps plants and trees to grow.



Unlike other plants, fungi cannot make their own food through photosynthesis. They get their food by eating what they are growing on and they do this quietly underneath the surface.

Fungi create webs of tiny threads around their food sources. These webs are called mycelia (singular: mycelium). The mycelia ooze enzymes that break down the food so that nutrients can be absorbed.



Bacteria are very small but mighty. Bacteria are so small they are impossible to see without a microscope.

The bacteria that live on organic material help break them down into nutrients which are returned to the soil. Some bacteria are able to live when there is no oxygen in the ground.



Invertebrates such as snails, ants, beetles, worms and wētā play a vital role in the ecosystem.

They start the decomposition process by breaking down the organic material into smaller pieces, and they introduce air into the soil by moving around. Roots need air to breathe. Without air in the soil the roots will become stressed and fail.

Photos: Jonathan Mower

Having a worm farm at home is a great way to recycle our food waste and reduce our landfill. Worms will eat food waste and turn it into valuable soil that you can put on your garden.



You can help the FBI by:

1. Putting your litter in the bin. Do not drop it when you are out walking.
2. Not picking mushrooms. They are busy working and picking them up will disrupt their mahi/ work.
3. Staying on paths when you are out walking.

Unscramble the words to find out the letter in the circle. Once you have circled the letters enter them below to find the hidden word

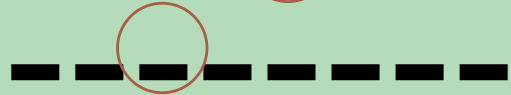
TUTINRENS



GOEYNX



ATRBEICA



ZYSEMNE



SESMCYTOE



LNTPAS



CSOEDPEOM



The circled letters

